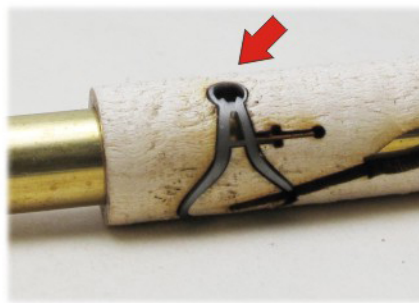
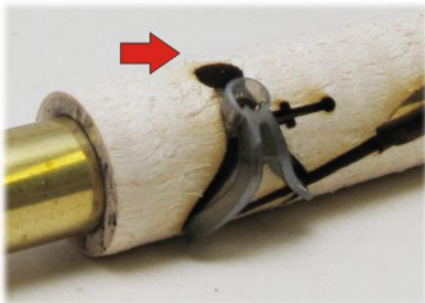


Basic Assembly Instructions for the Woodturners Inlay Kit



There is a total of 9 pieces in this kit. We're using some Metallic silver acrylic resin for the calipers and the turning tool, Cocobolo for the handle and curly maple for the body.

Because of the considerable curve on the caliper body, to avoid breaking this piece we're going to heat it up a bit to soften it and then bend it right into position. Because the acrylic is so thin, there are several ways we can do this. Hold the acrylic piece with a pair of tweezers and the hold it up to a 60 or 100W light bulb for a few seconds. You could also use a heat gun for this. We just want to soften it slightly. Notice in the 2 pictures you start by positioning the bottom of the caliper in the recess and then once heated, push it carefully up from the center and the top will slide right in. Make sure you insert (don't glue) the brass tube in there for alignment and support. We're now going to



put to rest of the pieces in position and secure them with the supplied elastic bands.

I start with the cocobolo tool handle and then the small brass

ferrule piece but there's no particularly correct order. Once all pieces are in place and tightly wrapped with the elastic bands (double wrap to eliminate any gaps), center the brass tube so the

overlap of the maple barrel flood all seams and joining also lock the brass tube in place.



is the same on both ends. Now pieces with thin CA glue. This will

Once the CA glue has cured, sand the ends flush to the brass tube. Don't use a barrel trimmer for this. Mount on the lathe for final turning and finishing using the finish of your choice. E-mail me at kallenshaan@cox.net with any questions about this or any of our laser cut inlay kits.